

# Standard Features:

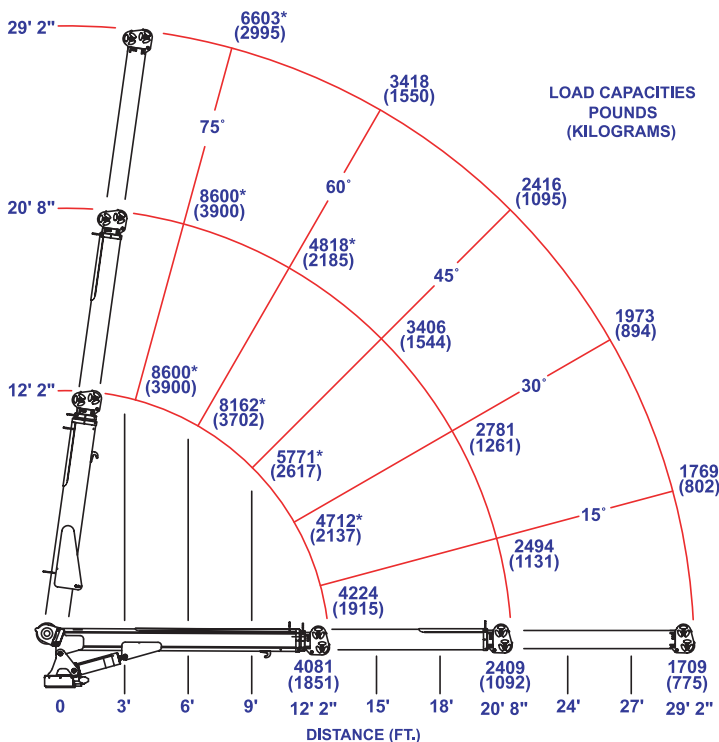
- 50,000 ft/lbs rating
- 8600 lbs lift @ 5.8 ft
- 29 ft of hydraulic reach
- 70 ft/min unloaded line speed
- Auto II Speed load sensing
- Proportional Control
- Wireless Remote & Tether
- Integrated Filtration
- Powder Coated Components

# Hydraulic

8  
0  
5  
9



## MODEL 8059



\* MAXIMUM SINGLE LINE CAPACITY IS 4300 LBS (1950kg) IN THESE OPERATING POSITIONS

## TIGER Model 8059 Specifications

<b>Crane Rating:</b>	50,000 ft/lbs
<b>Maximum Reach:</b>	29 ft from CL
<b>Extension:</b>	Double hyd from 12 to 29 ft
<b>Maximum Height:</b>	30.5 ft from base of crane
<b>Maximum Lift:</b>	4300 lbs single part line 8600 lbs double part line
<b>Boom Elevation:</b>	-5 to +75 degrees
<b>Cable:</b>	3/8 x 120 ft DGAC 6x36 IWRC
<b>Winch Type:</b>	Hyd planetary with axial piston motor
<b>Winch Speed:</b>	70 ft/min*
<b>Rotation:</b>	400 degrees with double reduction (worm & pinion)
<b>Control:</b>	Wireless proportional with 33 ft Tether cord
<b>Stowed Height:</b>	36"
<b>Weight:</b>	2500 lbs (crane only)
<b>Mounting Space:</b>	22" x 22"
<b>Valves:</b>	12 VDC D03 12 GPM
<b>Filter:</b>	9 Micron Absolute
<b>Pump Req'd:</b>	8 GPM @ 2700 PSI
<b>Min Chassis GVW Req'd:</b>	25,500 lbs

\*Speed represented is with recommended pump and an unloaded single line.