

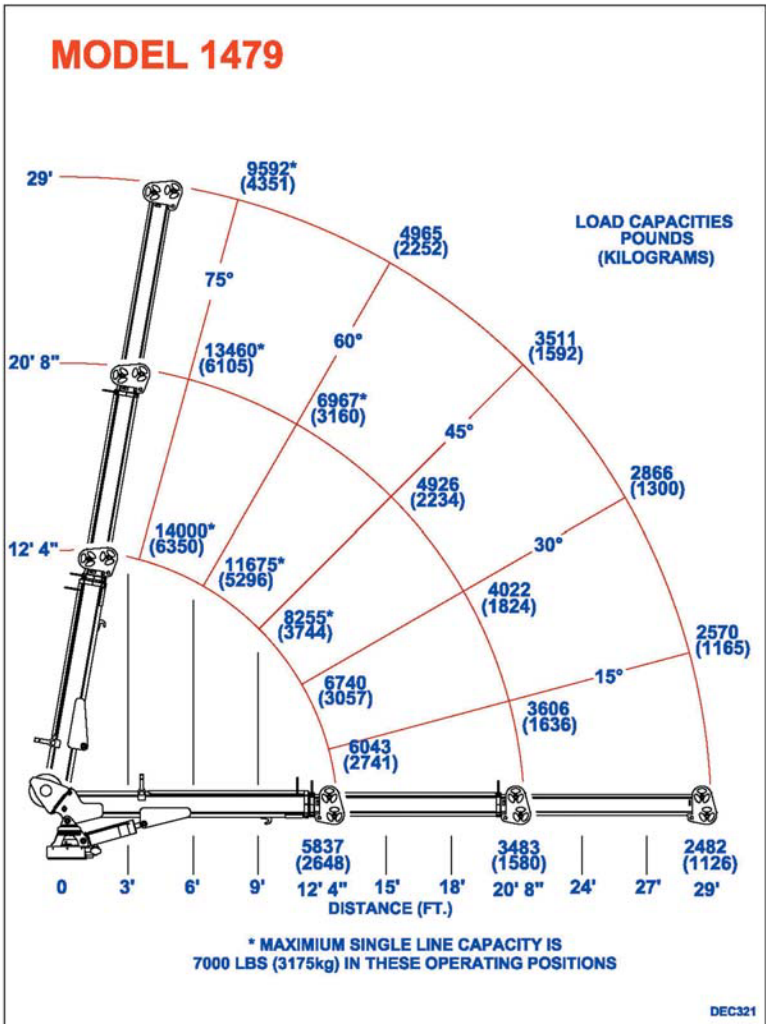
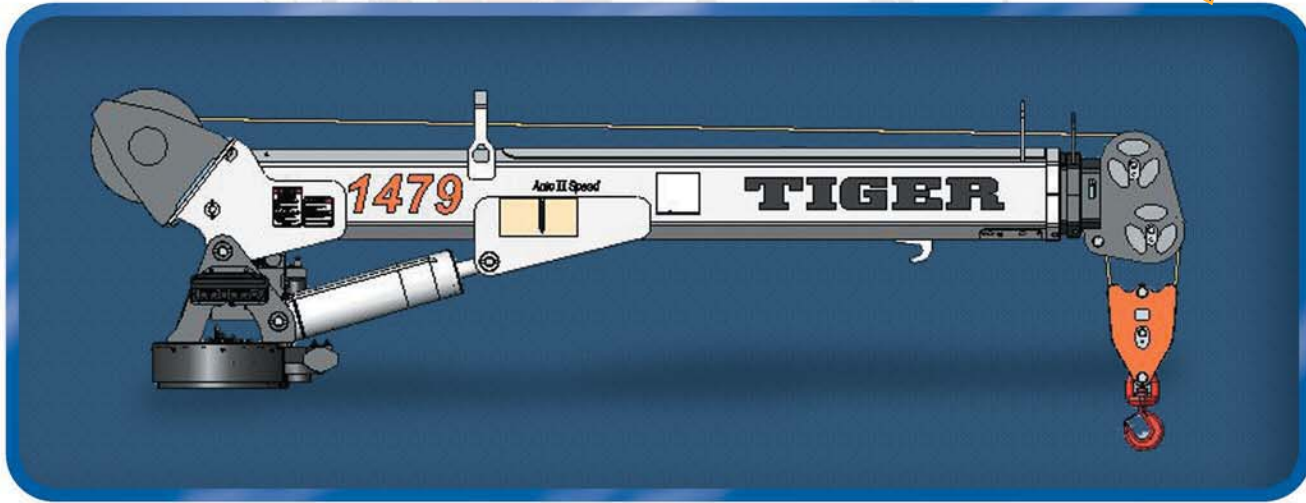
# Standard Features:

- 72,000 ft/lbs rating
- 14,000 lbs lift @ 5.1ft
- 29 ft of hydraulic reach
- Auto II Speed load sensing
- Hex boom Construction
- Powder Coated Components

# Hydraulic



1  
4  
7  
9



## TIGER Model 1479 Specifications

<b>Crane Rating:</b>	72,000 ft/lbs
<b>Maximum Reach:</b>	29 ft from CL
<b>Extension:</b>	Single hyd from 12 to 29 ft
<b>Maximum Height:</b>	31 ft from base of crane
<b>Maximum Lift:</b>	7,000 lbs single part line 14,000 lbs double part line
<b>Boom Elevation:</b>	-5 to +75 degrees
<b>Cable:</b>	1/2" x 120' Galvanized
<b>Winch Type:</b>	Hydraulic Planetary
<b>Winch Speed:</b>	60 ft/min*
<b>Rotation:</b>	400 degrees with double reduction (worm & pinion)
<b>Control:</b>	Wireless proportional with 33 ft Tether cord
<b>Stowed Height:</b>	41"
<b>Weight:</b>	3,000 lbs (crane only)
<b>Mounting Space:</b>	23" x 30"
<b>Valves:</b>	12 VDC D03 12 GPM
<b>Filter:</b>	9 Micron Absolute
<b>Pump Req'd:</b>	9 GPM @ 2600 PSI
<b>Min Chassis GVW Req'd:</b>	33,000 lbs

\*Speeds represented are with recommended pump and an unloaded single line.