

Standard Features:

- 62,000 ft/lbs rating
- 11,000 lbs lift @ 5.6 ft
- 21 ft of hydraulic reach
- Hex boom Construction
- Planetary Winch
- Worm Drive Rotation
- Crane Operation Light Bar
- Powder Coated Components

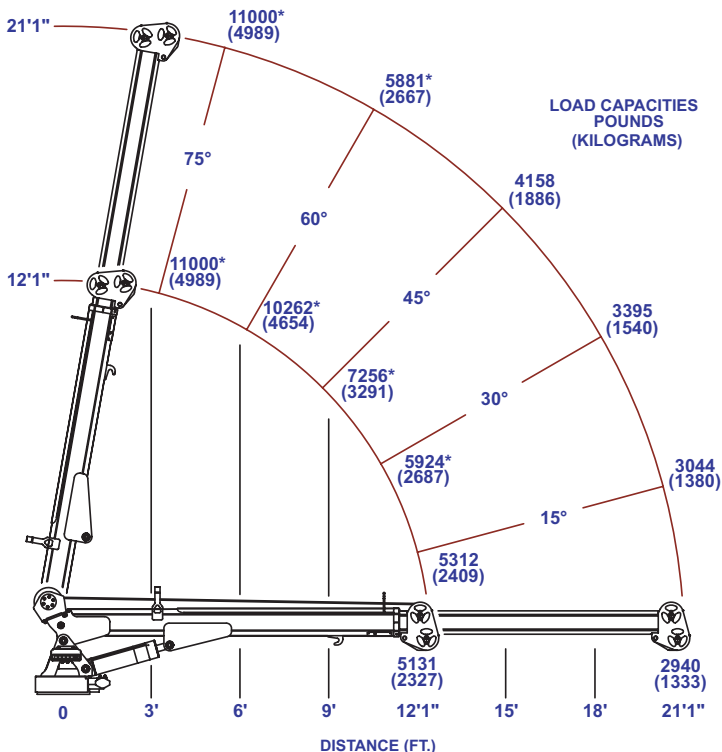
Hydraulic



1
0
6
1



MODEL 1061



* MAXIMUM SINGLE LINE CAPACITY IS 5500 LBS (2494kg) IN THESE OPERATING POSITIONS

DEC261

TIGER Model 1061 Specifications

Crane Rating:	62,000 ft/lbs
Maximum Reach:	21 ft from CL
Extension:	Single hyd from 12 to 21 ft
Maximum Height:	23 ft from base of crane
Maximum Lift:	5500 lbs single part line 11,000 lbs double part line
Boom Elevation:	-5 to +75 degrees
Cable:	7/16" x 120' Galvanized
Winch Type:	Hydraulic Planetary
Winch Speed:	60 ft/min*
Rotation:	400 degrees with double reduction (worm & pinion)
Control:	Wireless proportional with 33 ft Tether cord
Stowed Height:	41"
Weight:	2070 lbs (crane only)
Mounting Space:	23" x 30"
Valves:	12 VDC D03 12 GPM
Filter:	9 Micron Absolute
Pump Req'd:	9 GPM @ 2600 PSI
Min Chassis GVW Req'd:	25,500 lbs

*Speeds represented are with recommended pump and an unloaded single line.