



cobra

**high
performance
service
crane**



*Structures are designed for
a normal working life of*

**15
years**



6206H

Meets OSHA 1910.180 requirements
and ANSI B30.5 safety standards

Service Cranes

Maxilift

STANDARD FEATURES

- high strength hexagonal Swedish steel boom
- telescopic boom system, two fully hydraulic stages
- hydraulic planetary winch, high speed and efficiency
- hydraulic slewing system, unlimited, continuous rotation
- sheaves made in low friction, high strength, weather-proof polymer
- 100 ft. (30 mt.) of 25/64 " (10 mm.) 20,800 lbs. (9,400 kg.) breaking strength cable, non twisting type
- travelling block, swivel hook with safety latch
- full safety control system, integrating load limiting device, anti-two block and stop-end cable system on drum
- fully digital proportional controls, enable fast, precise, smooth operation. Easy upgrading from wire to radio with minimal changes.
- digital processor, LED display, on water proof casing, IP 65 grade protection, providing self-diagnostics and quick settings
- one handheld, trigger type, control box both for wire and radio remote, incorporating emergency shut-off and start/stop truck engineswitch
- solenoid operated valves with emergency manual override
- painted COBRA WHITE (RAL 9003), fading resistant polyurethane enamel

Only on radio remote versions:

- magnet for control box leaning
- battery recharging cable 6 ft. (2 mt.) length with plug for in-cab cigarette lighter

ACCESSORIES

8 gallons (30 lt.) reservoir oil, with filter on return line (only PTO driven)
Kit supplementary radio remote for compressor and accelerator

Outriggers :

- One side manual out, both legs manual up/down
- One side manual out, both legs hydraulic up/down
- One side hydraulic out, both legs hydraulic up/down
- One side manual out, both legs hydraulic up/down
- One side hydraulic out, both legs hydraulic up/down

6206H

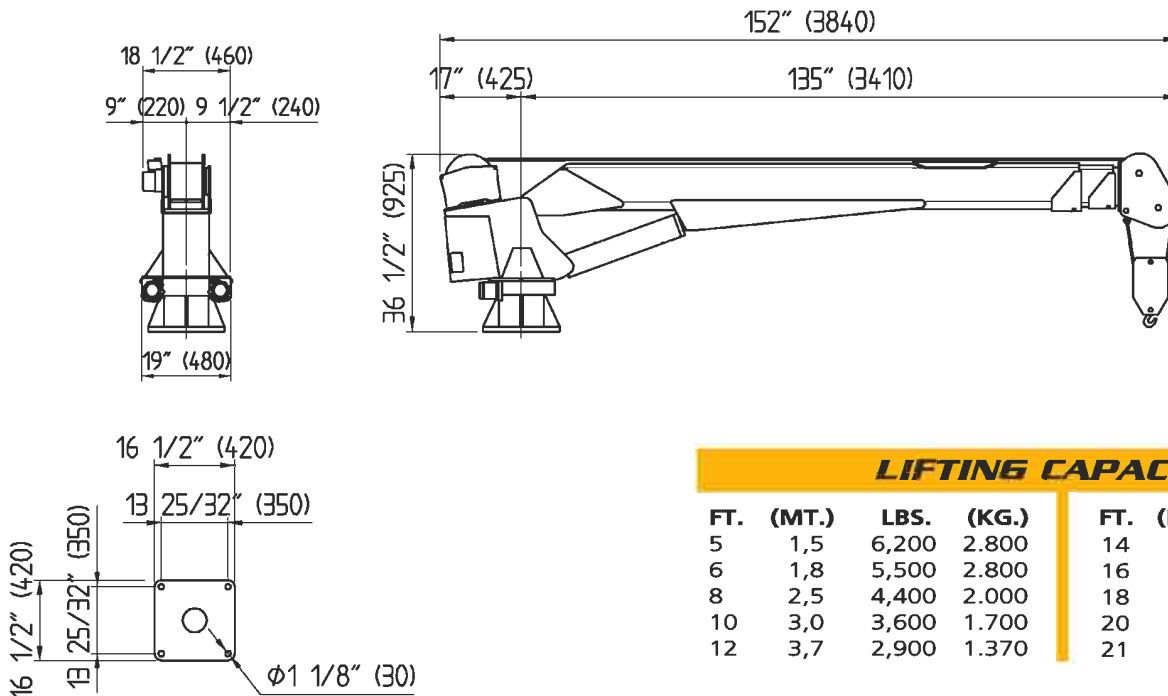
HYDRAULIC CRANE
37,000 FT.LBS.
(51 KNm.)



cobra

TECHNICAL DATA

- Crane rating : 37,000 ft. lbs. (51 KNm.)
- Horizontal reach : 21' (6,4 m.)
- Slewing angle : continuous unlimited
- Boom elevation angle : -5 to +75 degrees
- Winch capacity, single line : 3,100 lbs. (1.400 Kg.)
- Winch speed line : 46' fpm. (14 m./min.)
- Flow @ maximum pressure : 4.2 gpm. @ 2,600 psi. (16 l/min. @ 180 bar)
- Crane weight : 1,280 lbs. (580 Kg.)



LIFTING CAPACITIES

FT.	(MT.)	LBS.	(KG.)	FT.	(MT.)	LBS.	(KG.)
5	1,5	6,200	2.800	14	4,3	2,450	1.110
6	1,8	5,500	2.800	16	4,9	2,300	1.040
8	2,5	4,400	2.000	18	5,5	1,800	820
10	3,0	3,600	1.700	20	6,1	1,700	770
12	3,7	2,900	1.370	21	6,4	1,660	755

Next Hydraulics

Via Mediterraneo n.6 - 42022 BORETTO (RE) -ITALY
tel. +39.0522.963008 fax. +39.0522.963039



email: info@maxliftcrane.com
www.maxliftcrane.com